

# General Purpose Fuses IEC

## Masterfuse gG 690V



### Highlights

- High ratings 1250 to 2500 A
- gG operating fuse for 690V AC Nominal
- Conformity with IEC 60269 1 and 2
- Dimensional according section V on IEC 60269-2-1
- Breaking capacity 690V 160 KA – 50Hz

### Applications

- General protection on Low Voltage Panel
- High power protection on 690V AC Voltage
- Back up for circuit breaker
- Blade fuses for power bus bar assembly
- Disconnecter, Switch and/or Circuit Breaker isolation

### Main characteristics

Rated current	Size (Ø in mm)	Melting I <sup>2</sup> t (KA <sup>2</sup> s)	Total I <sup>2</sup> t at 690V (KA <sup>2</sup> s)	Power losses at I <sub>n</sub> (W)	Breaking capacity	Ref.Number	Catalog number
1250 A	76	1590	8200	78	160 KA at 690V AC	E 302753	MF76GG69V1250
1600 A	89	2500	13000	111		F 302754	MF89GG69V1600
2000 A	114	4800	25000	128		G 302755	MF114GG69V2000
2500 A	127	7000	36000	175		H 302756	MF127GG69V2500

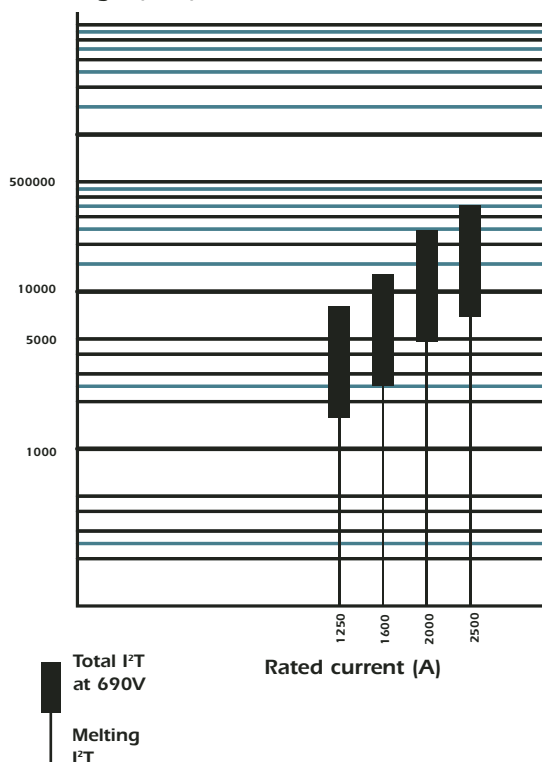
Pack: 1 piece

For ratings 3200A(Ø 146mm) – 4000A (Ø 160mm) – 4800 A (Ø 181mm) consults us

### Electrical characteristics

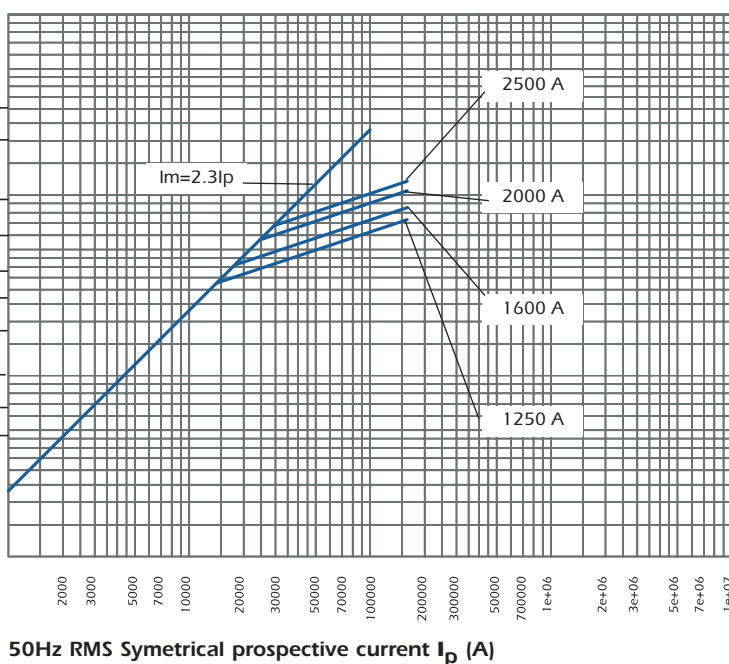
I<sup>2</sup>t vs rated current and applied voltage characteristics

Prearcing and clearing I<sup>2</sup>t(kA<sup>2</sup>s)



### Peak let-thru current characteristics

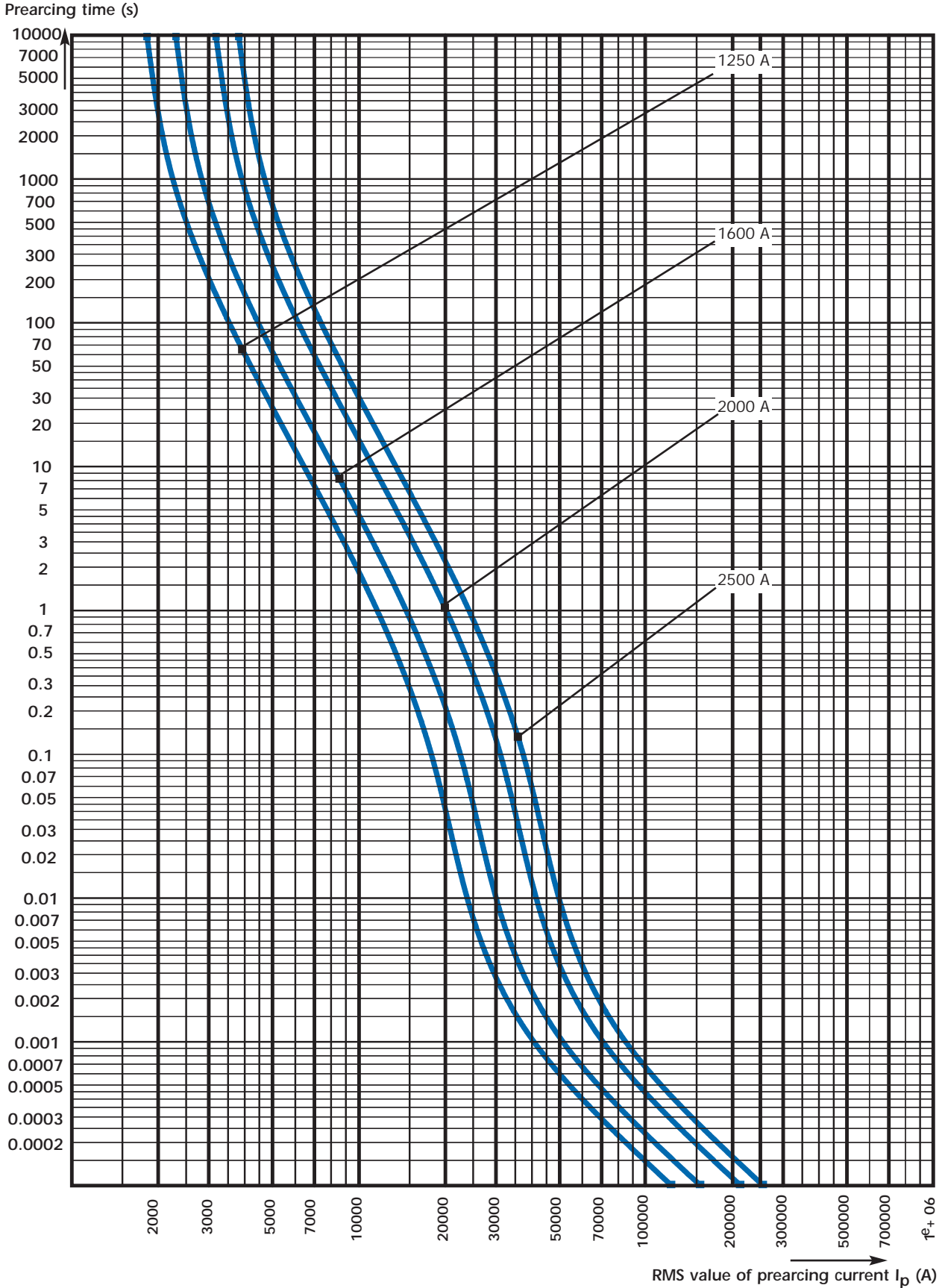
Maximum peak let-thru current I<sub>m</sub> (A)



# General Purpose Fuses IEC

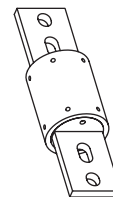
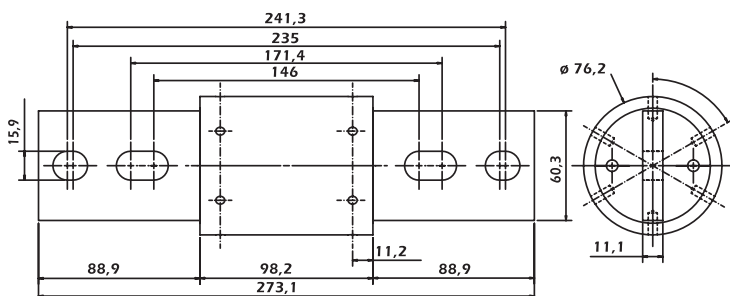
## Masterfuse gG 690V

### Time current characteristics

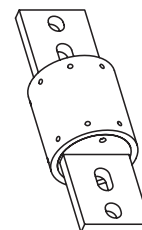
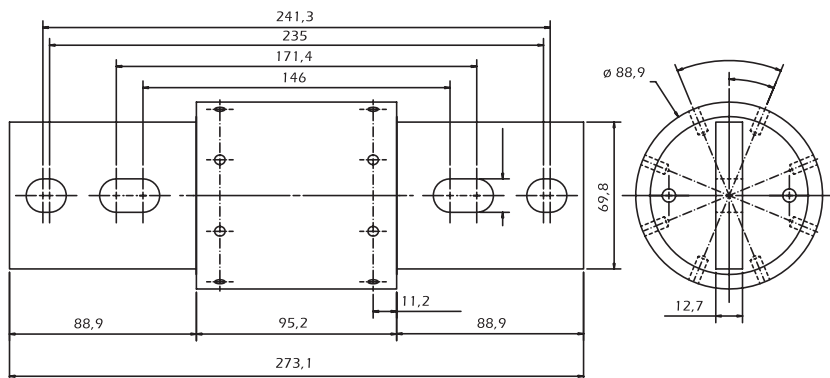


### Dimensions

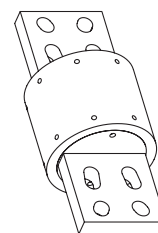
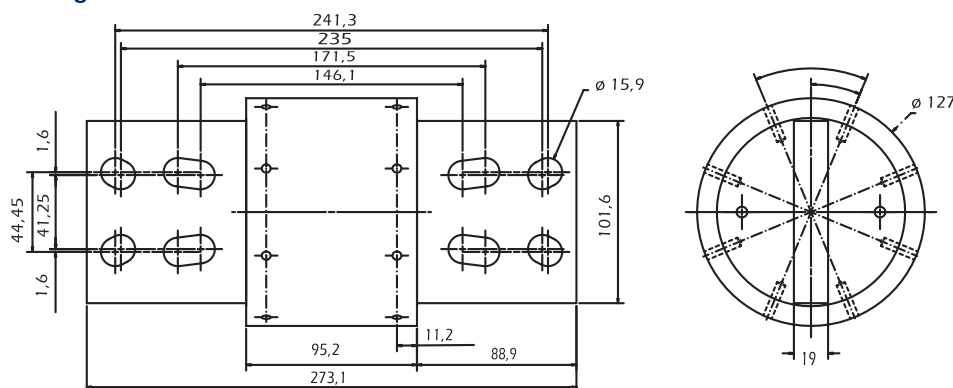
690 VgG 1250 A



690 VgG 1600 A



690 VgG 2000 A



690 VgG 2500 A

