

## BS88-2 Fuses gG/gM Sizes F1,F2



- The fuse comply with standard EN 60269-2 section II and standard BS88 part 2.
- This fuses are designed for :
  - "general purpose use" protection, (gG type)
  - motor protection (gM type)
- This fuse range insures an excellent current limitation for all overloads on a large range of applications. Their size cannot allow exchange by other fuses of higher rating in the F type range. They are compact and can be connected with clips.

### F1,F2 types - gG curve

#### Features/Benefits

- Compact design
- Curve gG and gM
- Very current limiting
- Tested in DC
- Voltage 415VAC
- High breaking capacity : 80kA @ 415VAC
- Connection by clips or appropriate fuse holders.

#### Ratings

##### ▪ F1 type

from 2A to 32A

##### ▪ F2type

from 10A to 63A

#### Applications

- Power cable protection
- Distribution panel protection
- Control panel
- Main circuit
- Lighting, heating and electrical equipments
- Capacitor, batteries
- Can be used with circuit breakers.

#### Approvals

- Asta  Certified

### Fuses designations and ratings

#### F1 type

Type	Rating	Ref. no	Designation	Pack.	Catalog Number
F1	2	S226336	2F1	10	
F1	4	T226337	4F1	10	
F1	6	V226338	6F1	10	
F1	10	W226339	10F1	10	
F1	16	X226340	16F1	10	
F1	20	Y226341	20F1	10	
F1	25	Z226342	25F1	10	
F1	32	A226343	32F1	10	
F1*	20M25	B226344	20M25F1	10	
F1*	20M32	C226345	20M32F1	10	

#### F2 type

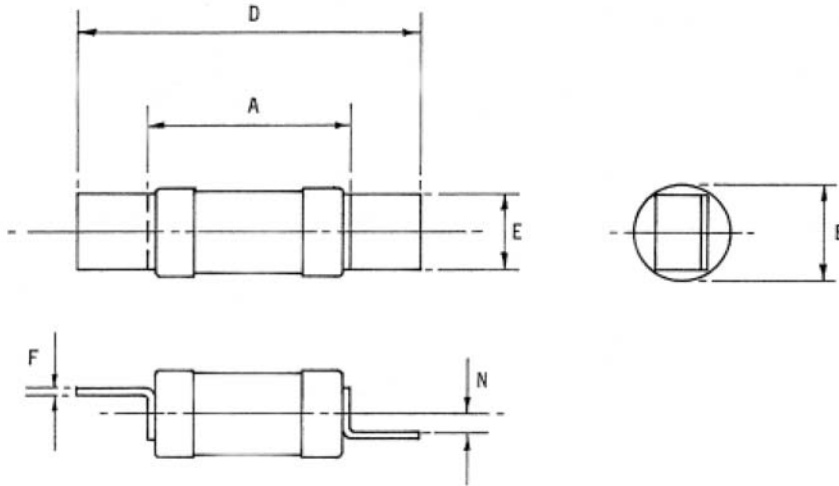
Type	Rating	Ref. no	Designation	Pack.	Catalog Number
F2	10	D226346	10F2	10	
F2	16	E226347	16F2	10	
F2	20	F226348	20F2	10	
F2	25	G226349	25F2	10	
F2	32	H226350	32F2	10	
F2	40	J226351	40F2	10	
F2	50	K226352	50F2	10	
F2	63	L226353	63F2	10	

\* Selection table for gM fuses : refer to A, B and C types

# General Purpose Fuses IEC

## BS88-2 Fuses gG/gM Sizes F1,F2

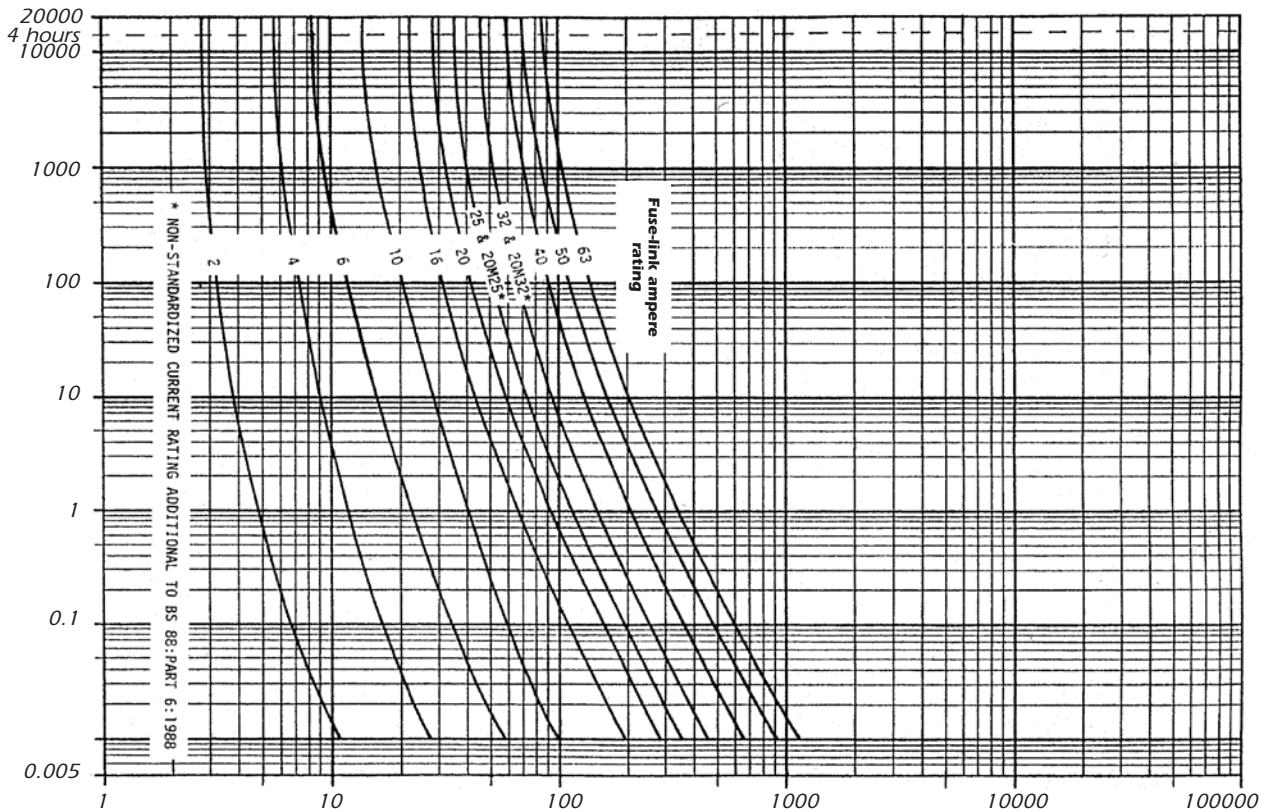
### Dimensions



Ref. BS 88	Voltage (Vac)	Current ratings (A)	Dimensions (mm)						
			A max	B max	D max	E max	F nom	N nom	
F1	415V	2, 4, 6, 10, 16, 20, 25, 32, 20M25*, 20M32*	mm	35,5	14,3	62	11,5	0,8	3,5
			in	1-2/5	9/16	2-7/16	9/20	1/32	1/8
F2	415V	10, 16, 20, 25, 32, 40, 50, 63	mm	39	17,5	69	15	1,4	3,5
			In	1-7/13	11/16	2-13/8	9/16	1/18	1/8

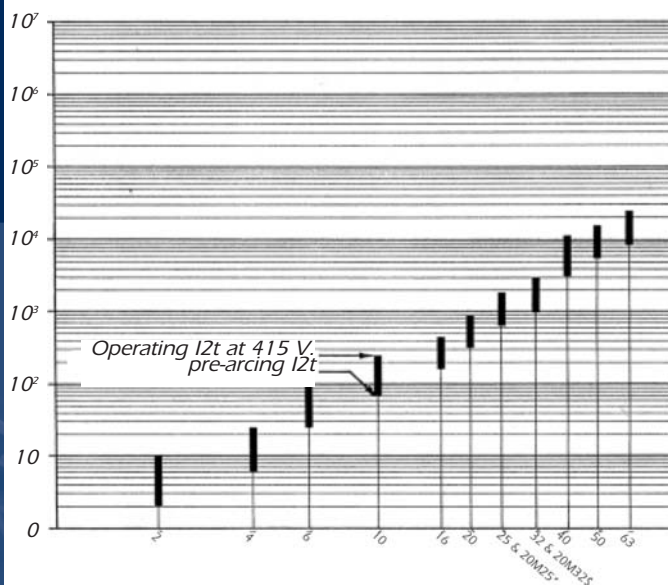
\* Current ratings additional to BS88 also comply to the BS 88 standard part 6 of 1988.

### Time/current data



## BS88-2 Fuses gG/gM Sizes F1,F2

### I<sup>2</sup>t characteristics

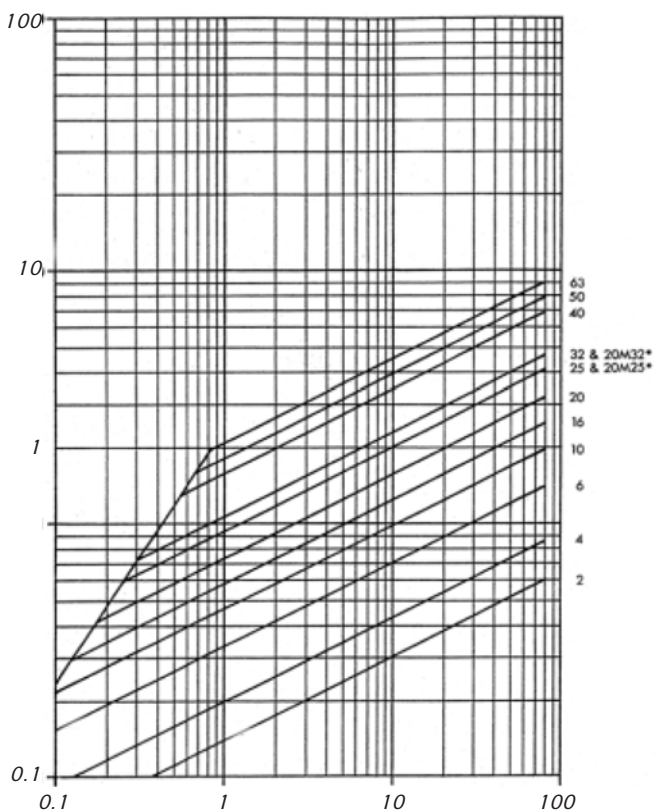


Curves from BS88 standard part 6 of 1988.

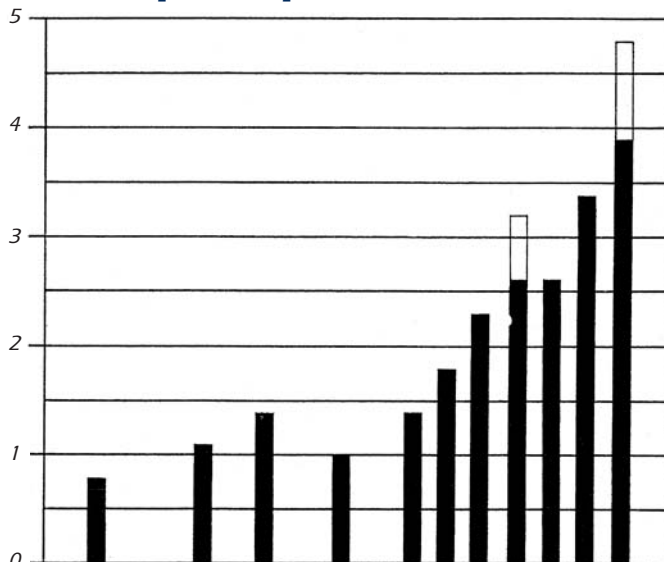
Voltage rating : 415 VAC.  
Interrupting rating : 40 kA under 415 VAC.

\* Current ratings additional to BS88 also comply to the BS 88 standard part 6 of 1988.

### Peak let-through current



### Dissipated power



BS 88-part 6 standardized limit

Curves from BS88 standard part 6 of 1988.  
Voltage rating : 415 VAC.  
Interrupting rating : 40 kA under 415 VAC.

\* Current ratings additional to BS88 also comply to the BS 88 standard part 6 of 1988.